

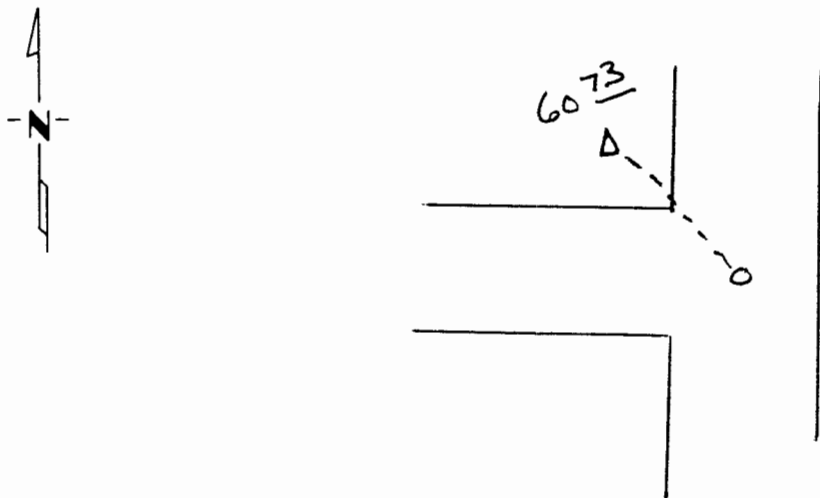
# CERTIFICATE OF LOCATION OF GOVERNMENT CORNER

Northeast \_\_\_\_\_ Corner of Section 35, Township 107, Range 41, 5th P.M.  
STATE OF MINNESOTA, County of Murray

At the corner location shown on the sketch:

- On June 17, 1995 found a R.R. spike (SEE BACK)  
DATE
- left monument as found,  lowered monument,  removed monument (explain)
- On June 17, 1995 placed a 5/8" iron stake in place of R.R. spike  
DATE

### SKETCH OF REFERENCE TIES



Top center of Tele. Pedestal NW 60.73'

Statement of evidence relative to this corner location is on back of page.

I hereby certify that this document and the data contained herein was prepared by me or under my direct supervision.

John E. Mosing 6-26-95  
SIGNATURE DATE

Registration No. 11943

Land Surveyor,  Professional Engineer

County Surveyor,  County Engineer

OFFICE OF THE COUNTY RECORDER  
County of \_\_\_\_\_

I hereby certify that this document was filed in the Co. Recorders office at \_\_\_\_\_ .M. on the \_\_\_\_\_ day of \_\_\_\_\_ A.D., 19 \_\_\_\_

County Recorder \_\_\_\_\_  
By \_\_\_\_\_, Deputy

DOCUMENT NO. \_\_\_\_\_

**Statement of Evidence:**

On June 17, 1995, we found a R.R. spike. We tied it out and dug with a back hoe and found nothing. There was evidence that someone had already dug. We set a 5/8" iron stake w/seal #11943 in place of the R.R. spike that was set by the DNR.